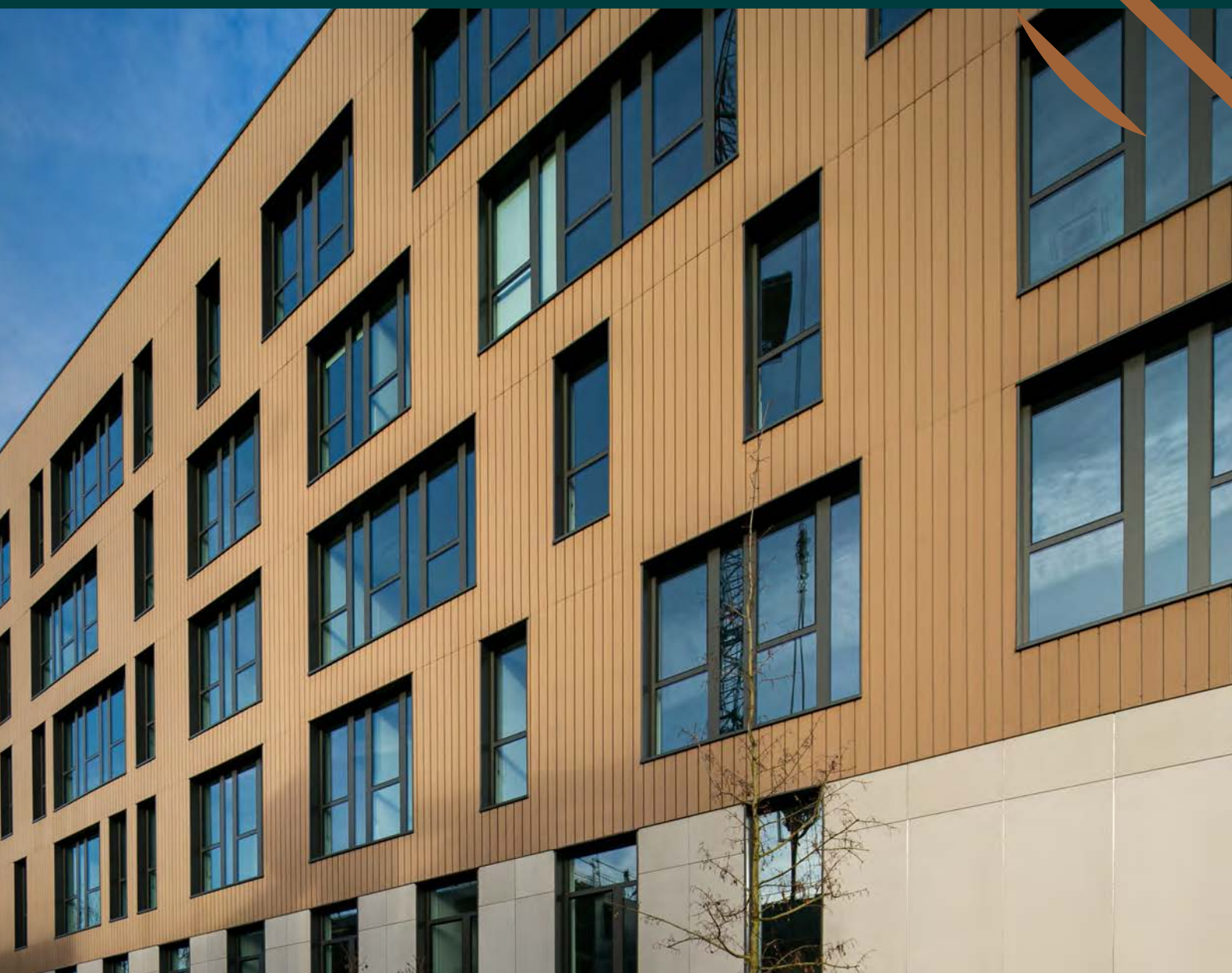
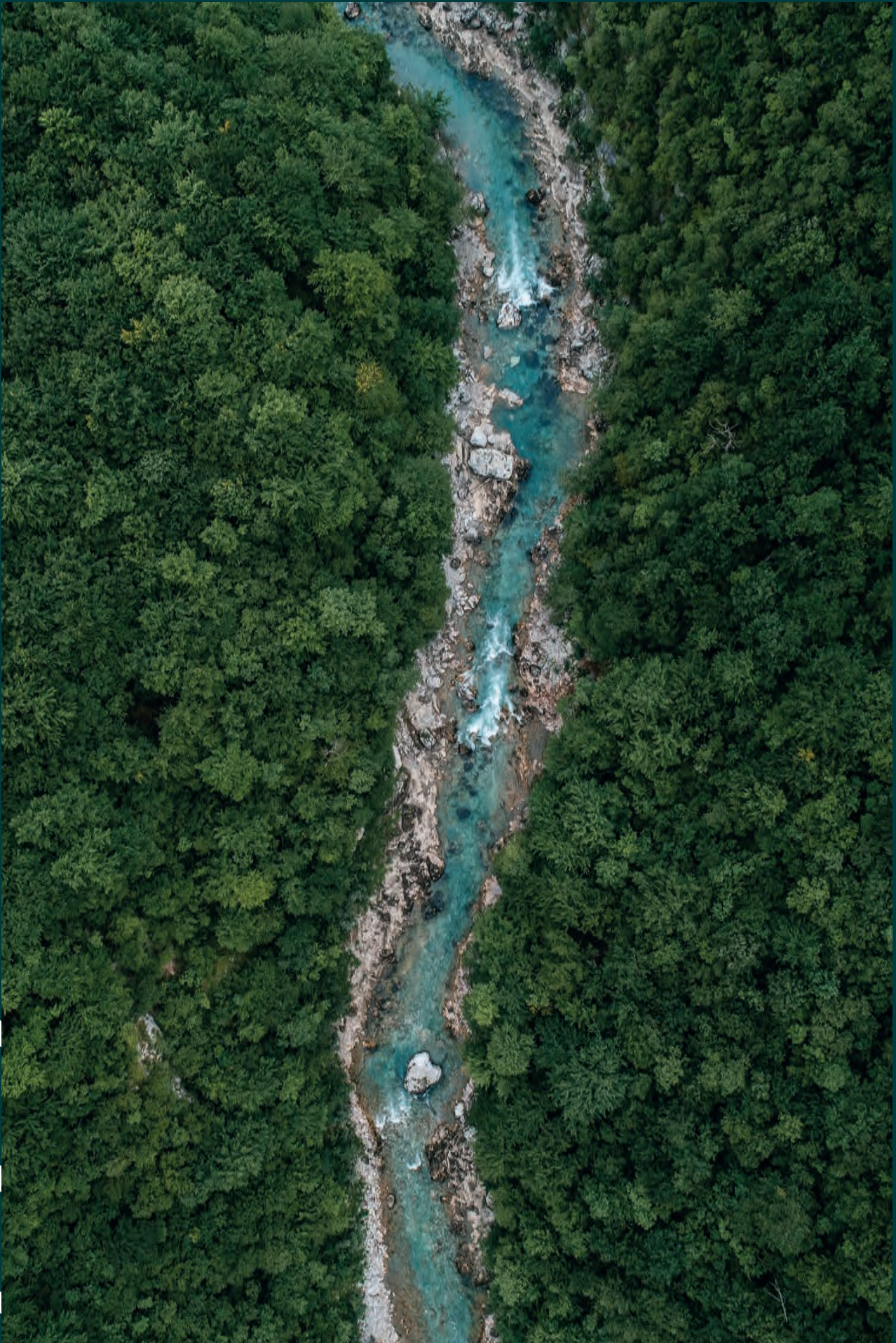




**It's about reinventing ourselves
sustainably**





It's about reinventing ourselves sustainably.

Innovation for a greener construction method

Neolife was established in 2012 from a strong founding idea:

to design and manufacture in France a completely new eco-material, combining plants and minerals, to offer constructive solutions with low environmental impact. **This unique innovation is VESTA®: a low-carbon material with a high content of recycled wood fibres.**

Our VESTA range® comes in **cladding and decking boards or decorative profiles** intended for construction industry professionals who want to build in a way that is more respectful of our planet.

Design and modularity to inspire you

We have given special consideration to the aesthetics and colorimetry of our products to ensure they bring a contemporary and warm design. And every year we bring you new solutions and innovative combinations for ever more architectural possibilities.

French expertise

We have chosen to manufacture in France to enhance national expertise, promote our country's employment and reduce our carbon footprint.



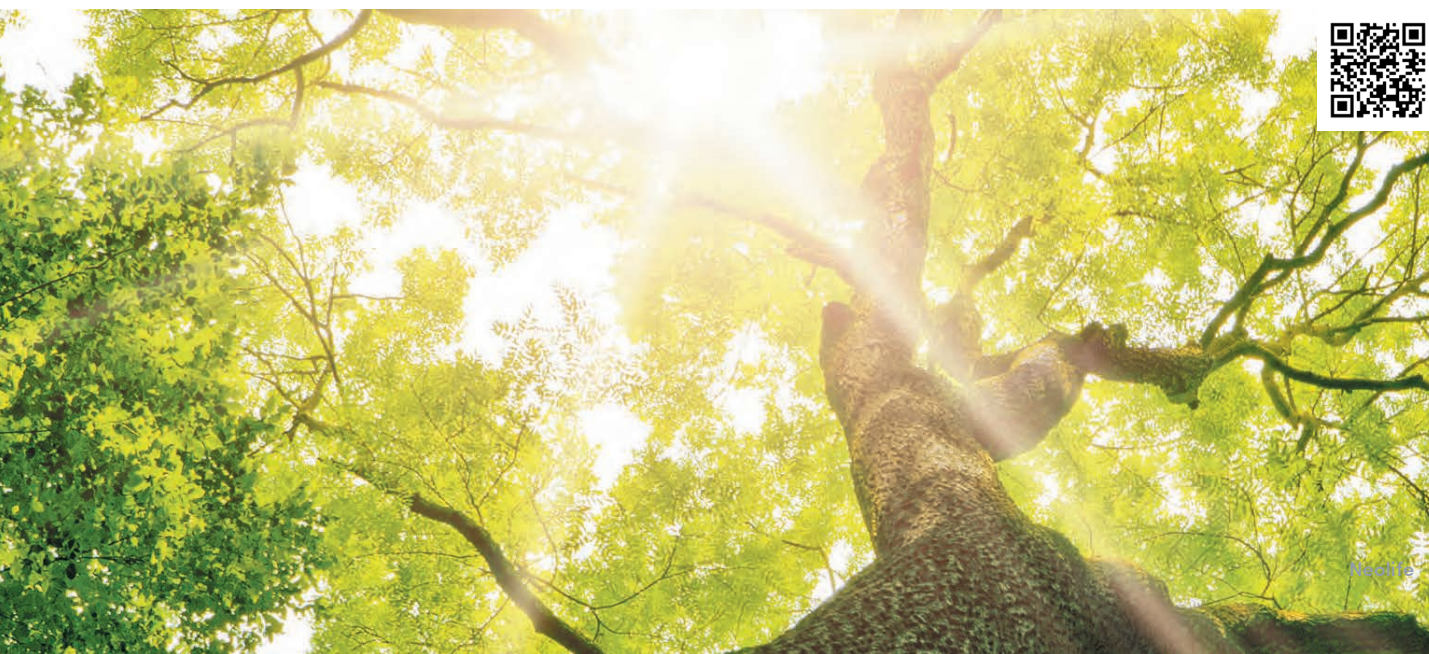
The environment at the heart of our concerns

VESTA technology® is designed with a circular approach and is based on an exceptionally high level of natural wood fibres. However, we do not cut down any trees; we recover and recycle virgin and perfectly healthy scrap wood from sustainably managed European forests.

Like solid wood, our materials are therefore low-carbon. They have been given the "Bio-source Product" label by Karibati, an expert in bio-sourced building materials.

Our solutions have the advantage of being naturally maintenance free during their lifetime, which avoids the use of water or chemical treatments that are harmful to the environment (varnishes, insecticides, etc.).

Our products are also 100% recyclable. At the end of their life, they can be ground down again and reused to manufacture new products that are equivalent or suitable for other uses. The carbon stocks therefore remain sustainable.





VESTA®:

Bio-based technology covered by 10 patents



VESTA® (Vegetal Ecological Stable Timber Advantage)

Our technology combines a very high wood fibre content, natural mineral salts and pigments and a neutral thermal binder free from heavy metals or phthalates.

This ingenious combination of plants and minerals results in an eco-material with certified technical performance.



Resistance and stability

The VESTA® is naturally rot-proof and hydrophobic for perfect resistance to bad weather, insects and fungi. Its great dimensional stability avoids any risk of deformation.



Maintenance free

After installation, our materials are maintenance free: no need for cleaning or subsequent chemical treatments (varnish, stain, insecticide).



Shades that stand the test of time

Mass dyed using mineral pigments, VESTA® doesn't grey. After a few weeks of uniform weathering, the colour stabilises and no longer changes over time, guaranteeing a long-lasting and harmonious appearance.



Bio-sourced label

Our eco-material VESTA® has been labelled "bio-based product" by Karibati, an independent organisation expert in bio-based materials. Approval N°14/06/21/38.



Quick installation

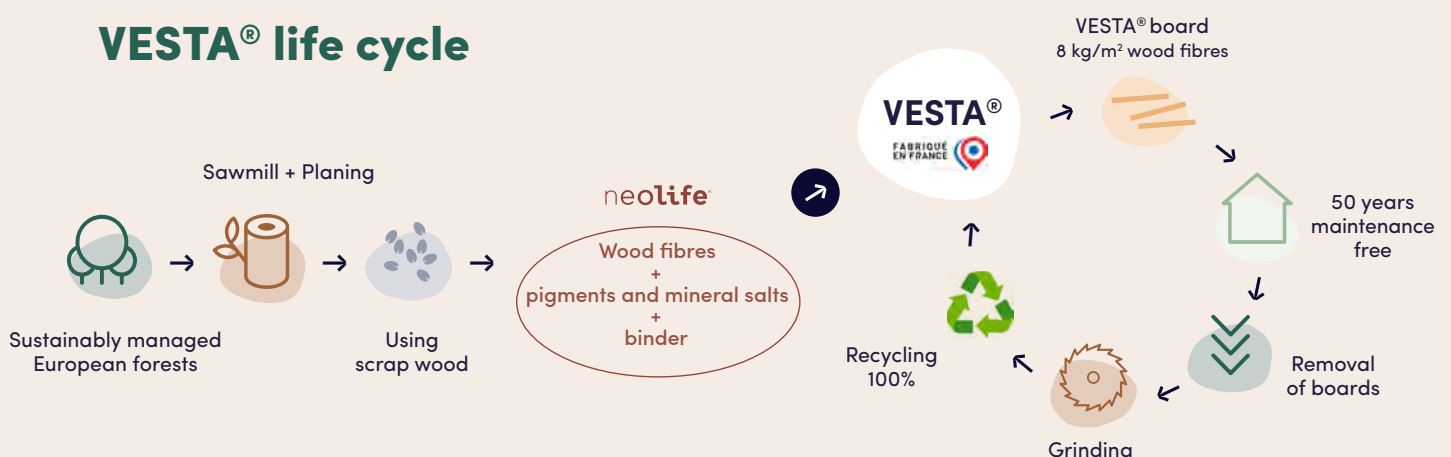
The installation system of our solutions has been specially designed for a quick and easy set-up.



100% recyclable

The materials in VESTA® are 100% recyclable. They can be ground down again and reused to manufacture new equally high-performance equivalent products.

VESTA® life cycle



Our colour chart

7 natural shades that stand the test of time

Our VESTA® material is mass-dyed using mineral pigments, offering a beautiful depth of colour and a perfect resistance to UV's.

So our products do not grey.

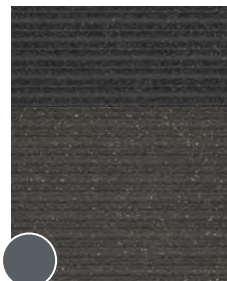
After our boards have been installed, the fibre will form an initial patina and then lighten. Depending on the exposure of the structure and the weather conditions, this natural process can take several weeks or even several months.

The shade will then stabilise evenly and will no longer change over time, to guarantee a long-lasting and harmonious aesthetic.



A

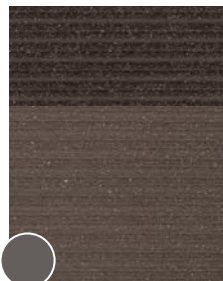
B



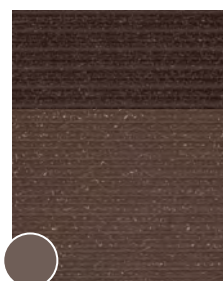
GRAPHITE
RAL 7016



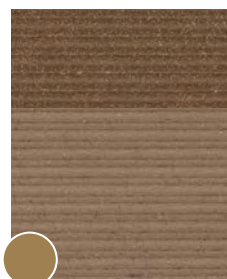
OCEAN
RAL 7046



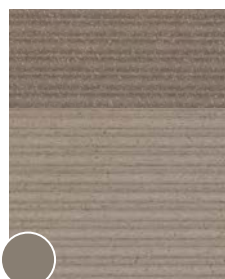
EARTH
RAL 8019



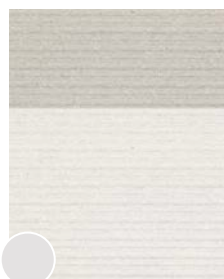
HEAT
RAL 8017



SUN
RAL 1011



SAND
RAL 1019



MOON
RAL 9002

Natural weathering

- A before weathering
- B after weathering

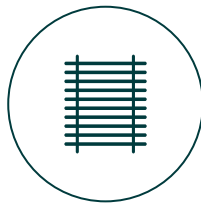
The RAL references shown are for illustrative purposes only and do not constitute a guarantee of the shade naturally obtained on the installation. These RALs results from the measurements taken in the factory on the samples collected: raw samples and weathered samples in our ageing area.

Our ranges



Claddings

Pages 8 to 19



Decorative profiles

Pages 20 to 23



Terraces

Pages 24 to 25

Technical solutions

Our expertise and quality standards guarantee the technical performance of our products.

With CSTB Technical Approval*, they are designed to meet the requirements of current constructions, in line with RE2020.

For any type of project

Both in new builds or redevelopments, our solutions adapt to a number of projects.

Our ranges are also ideal for off-site construction.

Enormous creative freedom with multiple possible finishes and layouts:

- Wide choice of shades and waves
- Horizontal or vertical installation with CSTB Technical Approval
- Combination with mouldings and accessories

Find our cladding and decorative profiles

on **bimobject**[®]



Public buildings



Multi-unit housing



Non-residential buildings



Single-family housing

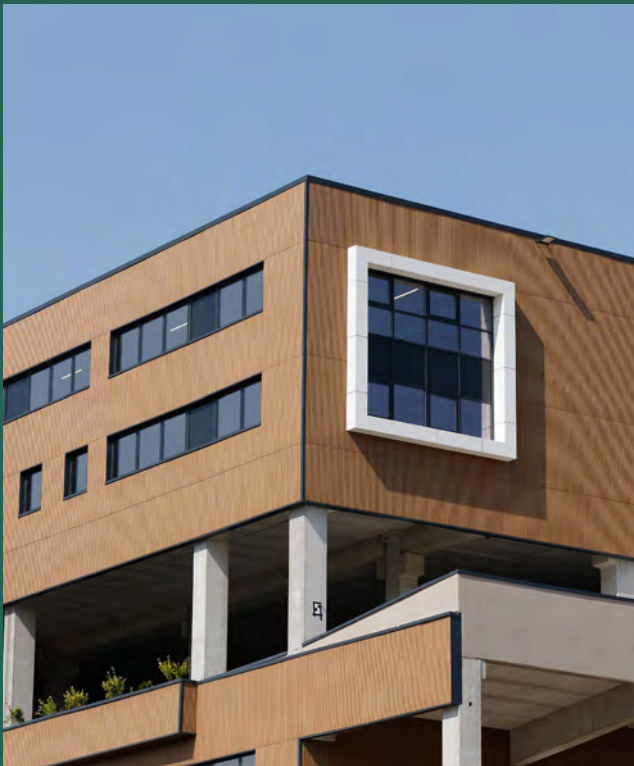


* Except profiles and terraces

So that we can adapt our ranges to the issues and realities of your projects, we offer our cladding in 5 standard sizes.

More flexibility and a genuine service to allow you to order quantities that best suit your needs and therefore:

- refine and reduce costs
- optimise waste
- consume only what is strictly necessary





COVER cladding

**Audacious architecture
with an unprecedented fire rating!**

Installation locations*

- Category 1, 2 and 3 family housing units A and B (IT 249)
- Public buildings categories 1 to 5 (IT 249)
- Labour code classified buildings

* to be validated by the control office

Characteristics

- Manufactured in VESTA® : an eco-material with a high content of revalued wood fibres, 100% recyclable and certified as a "bio-sourced product"
- Matt finish, elegant and contemporary aesthetic
- Maintenance free, rot-proof and hydrophobic
- Four profiles that can be seamlessly combined with waves of 6, 14 and 30 cm
- Invisible fixings using stainless steel screws and hooks
- Compatible mouldings: FINEO, FUSEO, LINEO

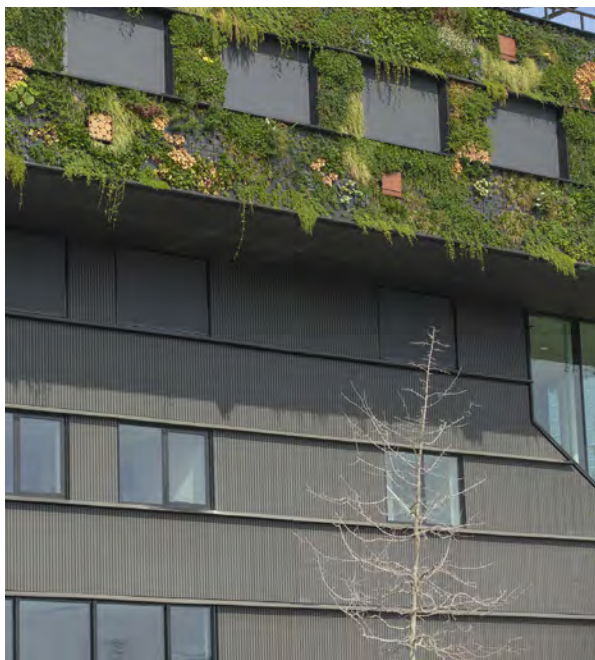
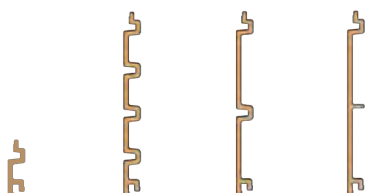


7 natural and long-lasting shades
(→ colour chart pg.5)

The COVER range

	COVER FLEXO	COVER 6	COVER 14	COVER 30
Number of waves	1	4	2	1
Width of the wave (mm)	60	60	140	300
Standard dimensions (mm)	Length: 2000 / 2500 / 3000 / 3500 / 4000 Width: 300 (except COVER FLEXO: 60)			

Overview



M1

Euroclasse B



Impact Q4



Wind V4



Seismic:
zones 1,2,3,4



COVER FLEXO

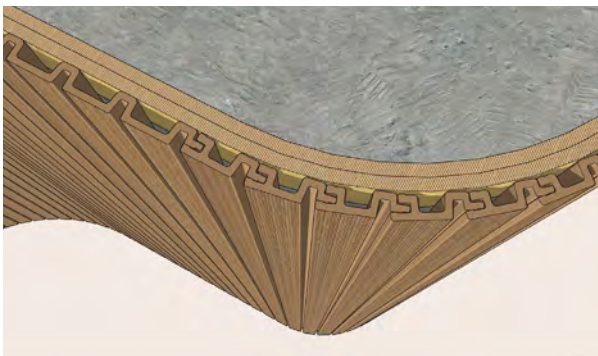
The cladding board that bends to any architectural boldness!



UA single 60 mm wave that covers curved walls up to 1 meter radius. A clever addition to the COVER range.

Characteristics

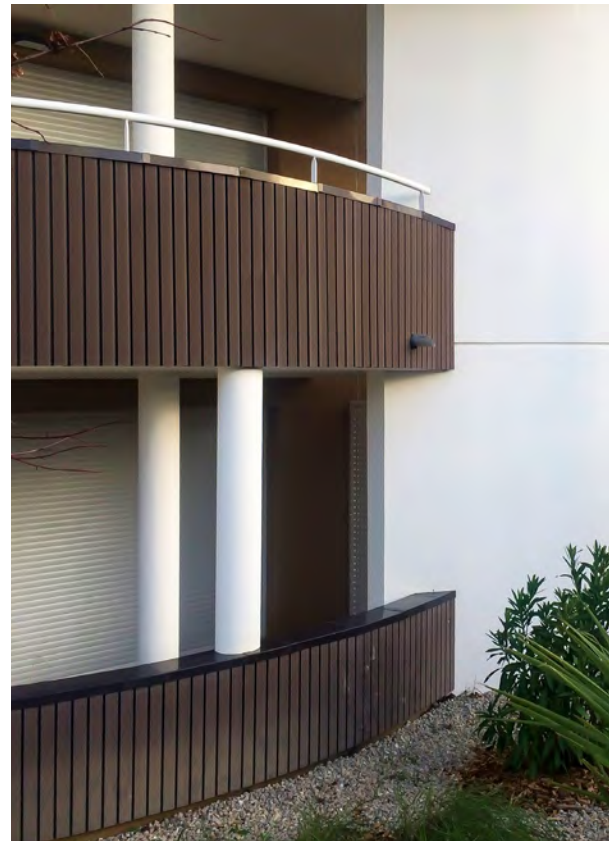
- Can be combined with the entire COVER range
- Vertical installation on convex or concave curved wall up to 1 m radius
- Invisible fixings using stainless steel screws and hooks on convex wall
- Discreet fixing using lacquered stainless steel screws on concave wall



Vertical installation on convex curved wall with a minimum radius of 1m



Vertical installation on concave curved wall with a minimum radius of 1m



TAKE A LOOK



FUSEO, LINEO, FINEO

Clever profiles to complement our cladding ranges and open up new architectural possibilities.

→ Explore them on pages 18-19

For more information, please download our technical specification booklets on our website www.neolife.fr





Collège Simone Veil - Saint Priest (69) - COVER 6 - Shade - Night • Architects: Aurélie Dargnat / Sarah Bigot for the City of Lyon



EHPAD - Saint Julien en Genevois (74) - COVER 6 - Shade - Earth
Architect: Chabanne



Multi-unit housing - Annecy (74) - COVER 6 - Shade - Sun • Architect: SUD Architecte



Collège Jean Charcot - Oissel (76) - COVER 6 & 14 - Shade - Sand • Architect: ATaub Rouen



Multi-unit housing - Meze (34) - COVER 6 - Shade - Sun
Architect: ARM Roch Marques



Multi-unit housing - Maisons Alfort (94) - COVER 6 & 14 - Shades - Sand & Sun & Earth • Architect: Nicolas Fritz / Ville de Maisons Alfort



SMART cladding

**An optimised and varied range
with different combinable profiles.**

Installation locations*

- Category 1, 2 family housing units (Ground floor + 3 max)
 - Category 5 public building
 - Labour code classified buildings
- * to be validated by the control office*

Characteristics

- Manufactured in VESTA® : an eco-material with a high content of revalued wood fibres, 100% recyclable and certified as a "bio-sourced product"
- Matt finish, elegant and contemporary aesthetic
- Maintenance free, rot-proof and hydrophobic
- Four possible profiles with waves of 2, 4, 9 and 20 cm
- Possibility of combining 4, 9 and 20 cm waves
- Discreet fixing using lacquered stainless steel screws
- Compatible mouldings: FINEO

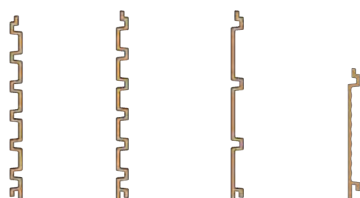


7 natural and long-lasting shades
(→ colour chart pg.5)

The SMART range

	SMART 2	SMART 4	SMART 9	SMART 20
Number of waves	6	6	3	1
Width of the wave (mm)	20	40	90	200
Standard dimensions (mm)	Length: 2000 / 2500 / 3000 / 3500 / 4000 Width: 300 except SMART 20: 200			

Overview



M2

Euroclasse C



Impact Q4



Wind V4



Seismic: zones 1,2,3,4



SMART 20

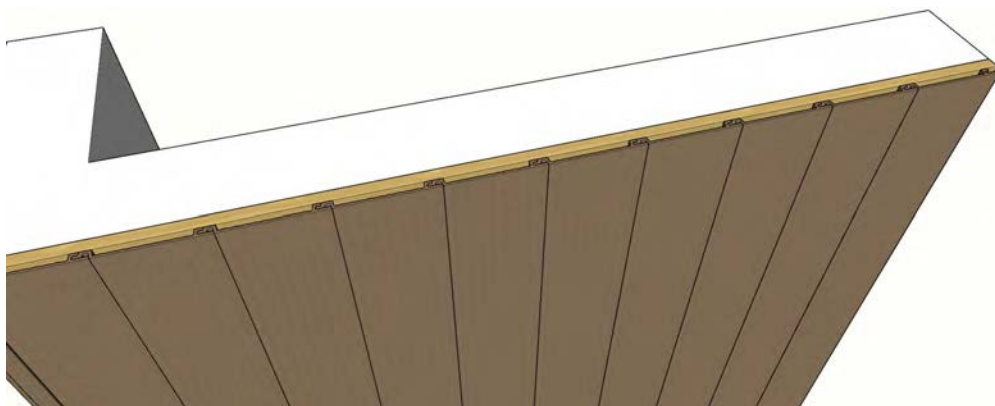
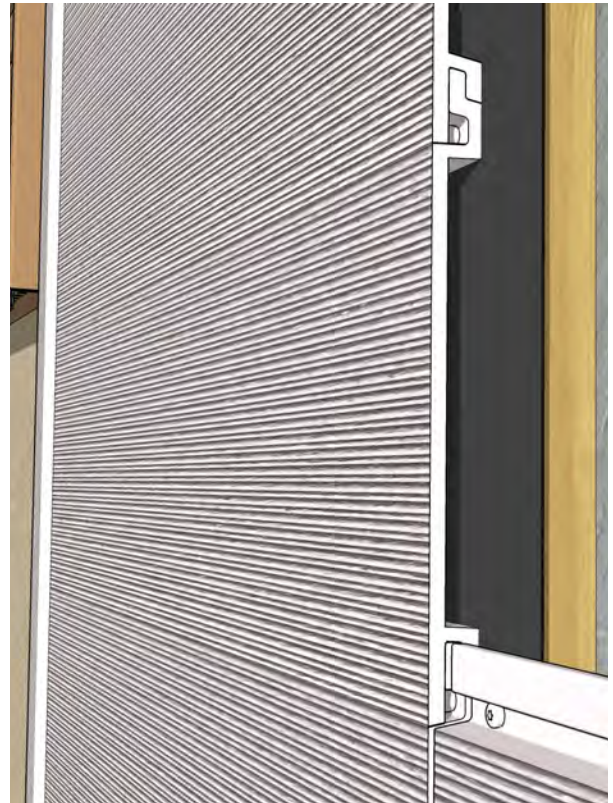
Panel appearance
and invisible fixing

New cladding blade with a jointed panel appearance, can be combined with the current SMART range*.

SMART 20 brings a flat panel aesthetic and combines perfectly with our false louvre boards to provide greater freedom with your layout.

Characteristics

- Can be combined with SMART 4 and SMART 9
- Invisible fixing using concealed stainless steel screws
- Can be installed vertically, horizontally and underside



For more information, please download our technical specification booklets on our website www.neolife.fr



* Can be combined with the entire SMART range, except SMART 2



Multi-unit housing - Le Carré Silva - St Herblain (44) - SMART 9 - Shade - Sun
Architect: Mark Guegan / Atelier 2G



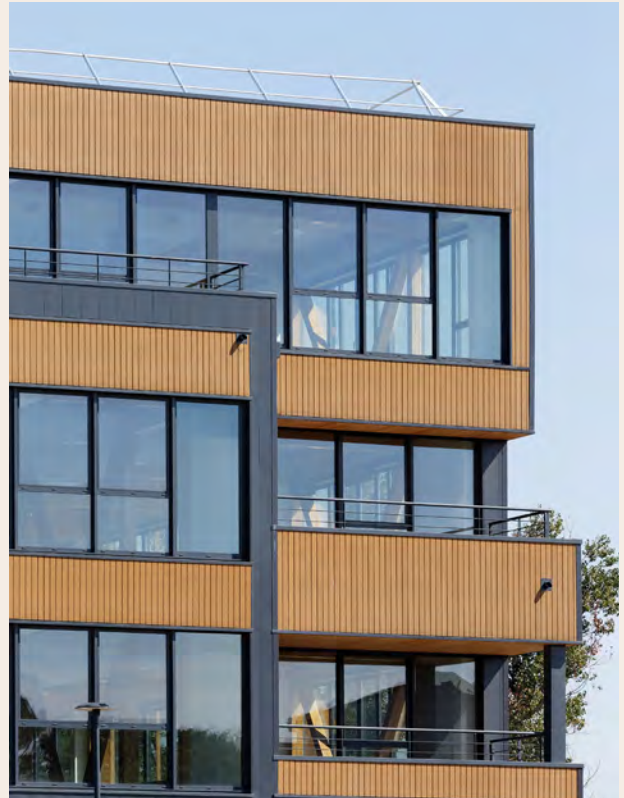
Multi-unit housing - Quinta Coliba - Marseilles (13) - SMART 9 - Shade - Heat
Architect: MAP Architecture



Single-family house - Hazebrouk (59) - SMART 4 - Shades - Sand & Sun • Architect: REMA CONSTRUCTION



Office building - Wooden Park - Toulouse (31)
 SMART 9 - Shade - Sun • Architect: Alexis Bellec / AB Architecture



Public building Shopping centre - SMART 9 - Shades - Night & Ocean



CLAD cladding

A cost-efficient and aesthetic solution for structures with no fire requirements.

Installation locations*

- Detached houses of family 1 category
 - Category 5 public building
 - Labour code classified buildings
- * to be validated by the control office

Characteristics

- Manufactured in VESTA® : an eco-material with a high content of revalued wood fibres, 100% recyclable and certified as a "bio-sourced product"
- Matt finish, elegant and contemporary aesthetic
- Maintenance free, rot-proof and hydrophobic
- 2 combinable profiles: waves of 4 or waves of 14 cm
- Discreet fixing using lacquered stainless steel screws
- Compatible mouldings: FINEO



7 natural and long-lasting shades
(→ colour chart pg.5)

The CLAD range

	CLAD 4	CLAD 14
Number of waves	6	2
Width of the wave (mm)	40	140
Standard dimensions (mm)	Length: 2000 / 2500 / 3000 / 3500 / 4000 Width: 300	
Overview		



M4

Euroclasse E



Impact Q4



Wind V4



Seismic: zones 1,2,3,4

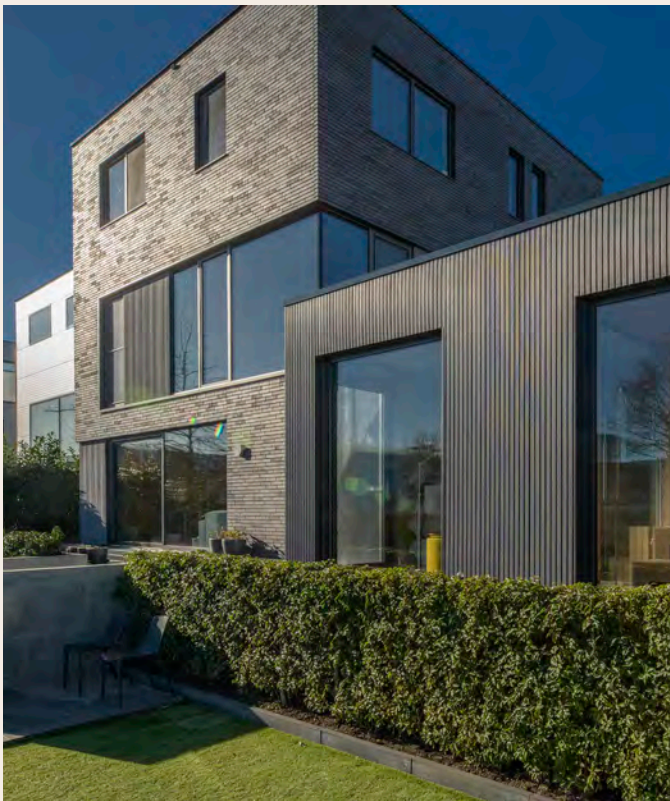


For more information, please download our technical specification booklets on our website www.neolife.fr





Office building - EKNOW - Nantes (44) - CLAD 14 - Shade - Sun• Architect: A26 Architecture



Single-family house - Utrecht, Netherlands - CLAD 4 - Shade - Ocean
Architect: Lengkeek architects



Healthcare clinic - Ducey (50) - CLAD 4 & 14 - Shades - Night & Ocean
Architect: Michel Gourion



Mouldings

Clever profiles to complement our cladding ranges and open up new architectural possibilities.

Characteristics

- Manufactured in VESTA® : an eco-material with a high content of revalued wood fibres, 100% recyclable and certified as a "bio-sourced product"
- Quick and easy implementation by interlocking in the cladding boards
- Installation on masonry wall, wood or metal frame
- Vertical or horizontal installation



7 natural and long-lasting shades
(→ colour chart pg.5)

FINEO

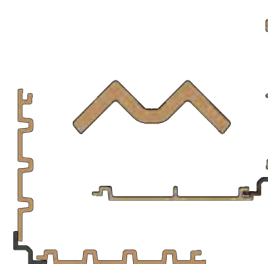
Its M-shape handles internal and external angles for a perfect finish that coordinates with the cladding. **Can be combined with our COVER, SMART and CLAD cladding.**



FINEO on the external angle

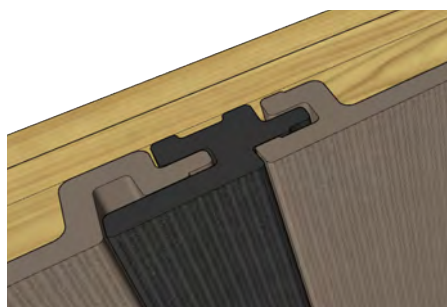


FINEO on the internal angle



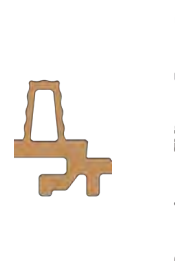
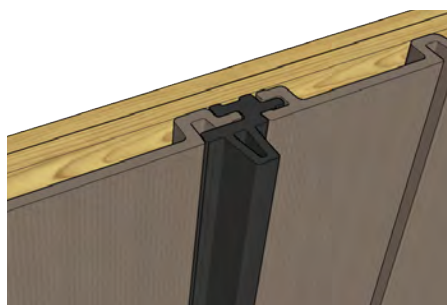
FUSEO

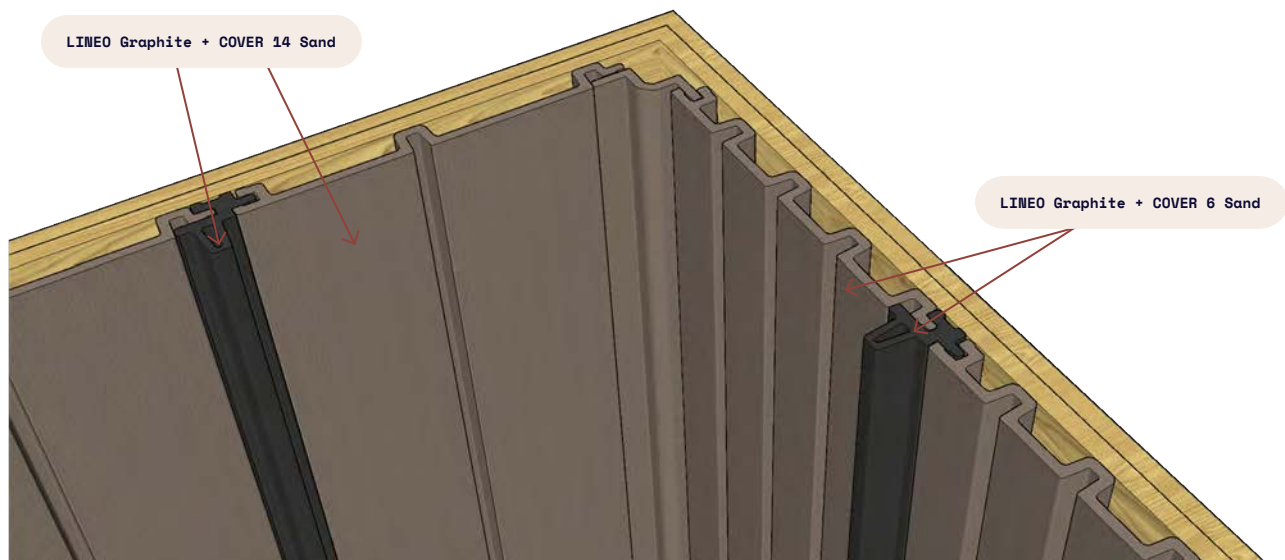
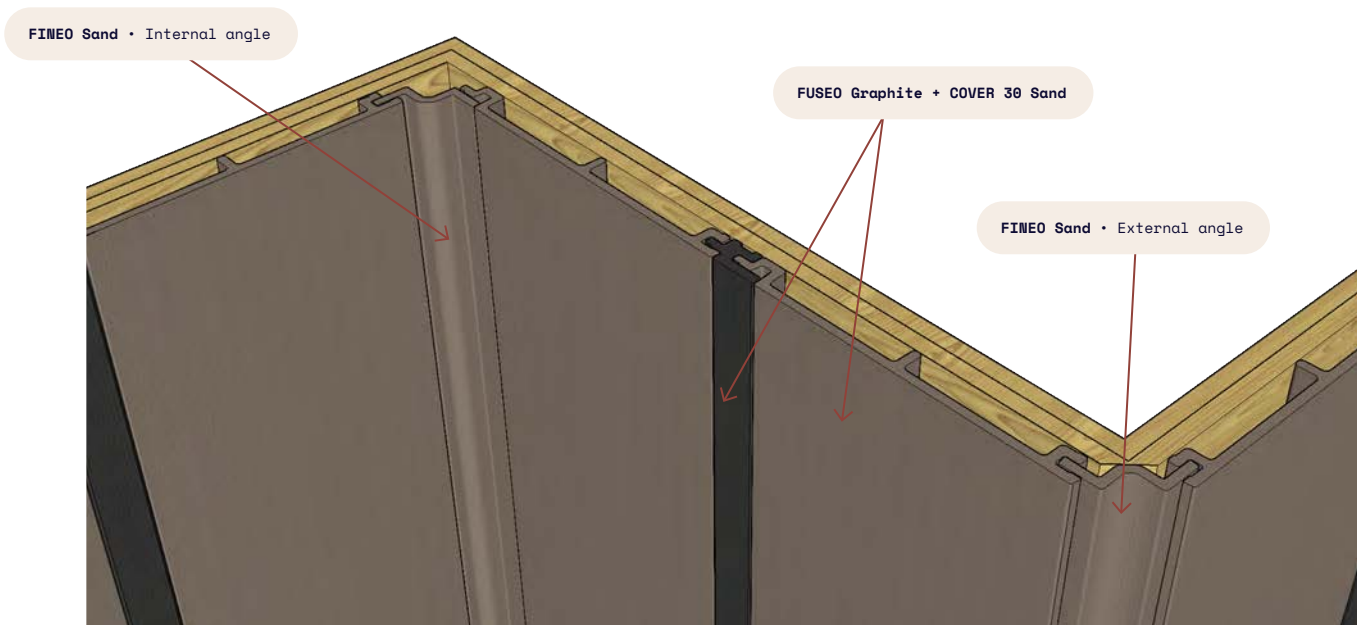
Junction profile to merge two boards and create a smooth effect by making the hollow of the wave disappear. **Can only be combined with the COVER range.**



LINEO

Used to enhance the façade with prominent lines and therefore create different undulations between the waves. **Can only be combined with the COVER range.**





The range of mouldings

	FINEO	LINEO	FUSEO
Profile length (mm)	3000 (other dimensions on request)		
Interlocked profile width (mm)	47 ext / 60 int	40	40
Total thickness (mm)	29.4	58.5	28.5
Profile weight	1.30 kg/ml	1.55 kg/ml	1.25 kg/ml
Compatible with	COVER, SMART, CLAD	COVER	COVER

Overview





SPACE profiles

Decorative or blackout, these profiles are suitable for many uses: façade cladding, creating privacy screens, sunshades or dividing walls.

Characteristics

- Manufactured in VESTA® : an eco-material with a high content of revalued wood fibres, 100% recyclable and certified as a "bio-sourced product"
- Standard 3 metre length (other sizes on request)
- Blends seamlessly with all of our cladding and decking solutions
- Discreet fixing using stainless steel brackets
- Vertical installation on walls and between slabs
- Horizontal wall or board installation
- Can be mounted in a metal frame (not supplied by Neolife)
- Available in addition: blanking plug

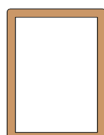
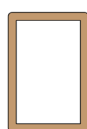


7 natural and long-lasting shades
(→ colour chart pg.5)

The SPACE range

	SPACE 4	SPACE 6
Standard dimensions (mm)	3000 x 40 x 60	3000 x 60 x 80

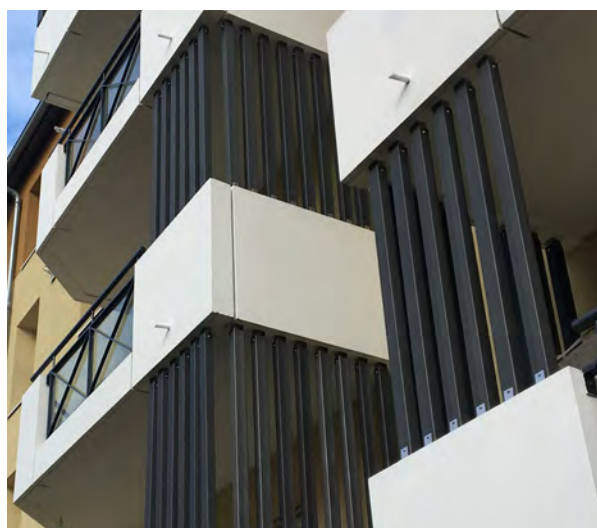
Overview



M2

M1

on request



For more information, please download our technical specification booklets on our website
www.neolife.fr





SPACE 6 - Shade - Sun



SPACE 6 - Shade - Sand • Architect: Anne Terrier / Ann'T Architecture



SPACE 4 - Shade - Heat



SPACE 6 - Shade - Night • Architect: Perron Ingénierie & Claude de Chazeron



SPACE 6 - Shade - Sun • Architect: Atelier Thierry Roche



SHADOW Profile

A 14 cm wide hybrid profile, ideal for creating shutters, balcony dividers, privacy screens or sunshades.

Characteristics

- Manufactured in VESTA® : an eco-material with a high content of revalued wood fibres, 100% recyclable and certified as a "bio-sourced product"
- Standard 3 metre length (other sizes on request)
- Blends seamlessly with all of our cladding and decking solutions
- Can be mounted in a metal frame (not supplied by Neolife)
- Horizontal or vertical laying direction



7 natural and long-lasting shades
(→ colour chart pg.5)

SHADOW

Standard dimensions (mm)	3000 x 140 x 20
--------------------------	-----------------

Overview



M2

M1

on request



For more information, please download our technical specification booklets on our website
www.neolife.fr





SHADOW - Shade - Sun



SHADOW - Shade - Heat



SHADOW - Shade - Heat



SHADOW - Shade - Sun • Architect: LS Architect



SHADOW - Shade - Heat



DECK 30 boards

**Durable, maintenance free,
splinter-free and non-slip decking boards.**

Their unique format gives DECK terraces a modern and elegant finish, while ensuring ease of installation, colour stability and low thermal inertia.

Characteristics

- Manufactured in VESTA® : an eco-material with a high content of revalued wood fibres, 100% recyclable and certified as a "bio-sourced product"
- Standard board length at 2.50m
- "Extra wide" boards coordinated with our cladding ranges
- Can be dismantled individually with invisible fixings
- Non-slip, splinter-free boards
- Available accessories: claws, hook, trimming strip, finishing edge

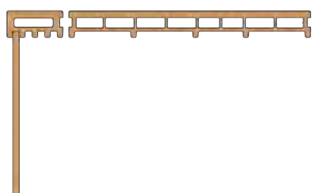


7 natural and long-lasting shades
(→ colour chart pg.5)

DECK 30

Standard dimensions (mm)	2500 x 300
--------------------------	------------

Overview



M3

Euroclasse Bfl



Slip resistance:
SRT 78 (R13)



For more information, please download our technical specification booklets on our website
www.neolife.fr





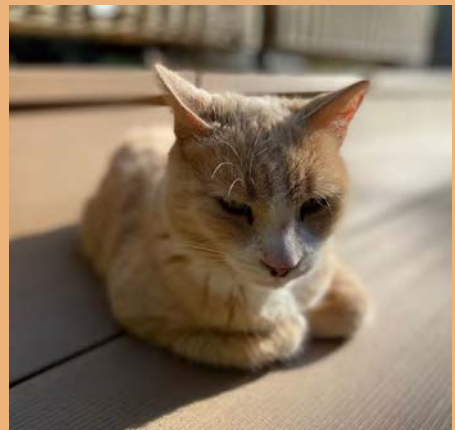
DECK 30 - Shade - Ocean Architect: Paul-Eric Vogel













DECK 30 - Shade - Ocean



DECK 30 - Shade - Sun



Technical specifications of Neolife solutions

Cladding boards	COVER 6	COVER 14	COVER 30	COVER FLEXO	SMART 2	SMART 4	SMART 9	SMART 20	CLAD 4	CLAD 14
Fire rating	B-s3,d0 (M1) Complies with IT 249				C-s3,d0 (M2)				E (M4)	
Dimensions (mm)*	Length: 2000 / 2500 / 3000 / 3500 / 4000									
	Width : 300 except COVER FLEXO: 75				Width : 300 except SMART 20: 200				Width : 300	
Board thickness (mm)	28.5				19.5				28.5	
Weight (kg/m²)	17.9	15.1	15.6	22	11.7	11.7	10.7	10.3	10.6	8.8
Type of fixing	Invisible fixing by concealed stainless steel screws and hooks				Discreet fixing by lacquered stainless steel screws at the bottom of the waves					
Laying direction	Vertical / Horizontal / Underside			Vertical	Vertical / Horizontal / Underside					
Support walls	Concrete / Masonry of coated elements / Wood 31.2 / CLT wood / Metal sheets									
Curved wall	Faceted vertical installation with minimum radius of 3.5 m and up to 1 m if COVER FLEXO				Faceted vertical installation, minimum radius of 3.5 m				Curved vertical installation, minimum radius of 3.5 m	
Compatibility between profiles	Combinable				No	Combinable			Combinable	
Shades	<div><div></div> Graphite</div> <div><div></div> Ocean</div> <div><div></div> Earth</div> <div><div></div> Heat</div> <div><div></div> Sun</div> <div><div></div> Sand</div> <div><div></div> Moon</div>									
Possible accessories	FUSEO / FINEO / LINEO				FINEO					
Profiles	6				2				4	
	14				4				14	
	30				9					
	FLEXO				20					
Application areas**	<ul style="list-style-type: none">• Category 1, 2 and 3 family housing units (IT 249)• Public building category 1 to 5 (IT 249)• Labour code classified buildings				<ul style="list-style-type: none">• Category 1 and 2 family housing units• Category 5 public building• Labour code classified buildings				<ul style="list-style-type: none">• Detached house (4m party wall)• Category 5 public building• Labour code classified buildings	

* Orders under 60m², ask us

** To be confirmed by the design office for each project

Decorative profiles		SPACE 4	SPACE 6	SHADOW
Fire rating		M2 / M1 on request		
Dimensions (mm)*	3000 x 40 x 60	3000 x 60 x 80	3000 x 140 x 20	
Weight (kg/ml)	1.0	1.8	1.57	
Fixings	Discreet using stainless steel bracket		Metal frame not supplied by Neolife	
Laying direction		Vertical / Horizontal		
Shades		<div><div></div> Graphite</div> <div><div></div> Ocean</div> <div><div></div> Earth</div> <div><div></div> Heat</div> <div><div></div> Sun</div> <div><div></div> Sand</div> <div><div></div> Moon</div>		
Profiles	<div><div></div><div></div></div>		<div></div>	
* Other sizes on request				

Decking boards		DECK 30
Fire rating		BFL-S1 (M3)
Dimensions (mm)		2500 x 300
Weight (kg/m ²)		19.00
Fixings		Invisible and removable fixings
Shades		● Graphite ● Ocean ● Earth ● Heat ● Sun ● Sand ● Moon
Profile		

Find our cladding and decorative profiles on

bimobject[®]



Looking for inspiration?

Enter a new dimension with our innovative construction solutions
and explore your Neolife product online.

bimobject®



Bâtiment Sendaï
11 chemin des Anciennes Vignes
69410 Champagne-au-Mont-d'Or

+33 (0)4 78 25 63 08
contact@neolife.fr



neolife.fr

